


cattledata
Agrident AWR100/200 Manual

Copyright Information

© 1978-2017, Farmdata Limited
Westertown
Rothienorman
Aberdeenshire
AB51 8US

The information contained in this manual and the accompanying software program are copyrighted and all rights are reserved by Farmdata Ltd.

Farmdata Ltd reserve the right to make periodic modifications of this product without the obligation to notify any person or entity of such revision. Copying, duplicating, selling or otherwise distributing any part of this product without the prior written consent of an authorised representative of Farmdata Ltd are prohibited.

Information contained in this document is subject to change without notice and does not represent a commitment on the part of Farmdata Ltd. The software described in this manual is furnished under a license agreement. The software may be used or copied only in accordance with the terms of this agreement.

Limitations of Liability

In no event will Farmdata Ltd or any other person involved in the creation, production or distribution of the Farmdata software be liable to you on account of any claim for any damages, including any lost profits, lost savings, or other special, incidental, consequential, or exemplary damages, including but not limited to any damages assessed against or paid by you to any third party, arising out of the use, inability to use, quality or performance of such Farmdata software and user manual, even if Farmdata Ltd or any such other person or entity has been advised of the possibility of such damages, or for any claim by any other party. In addition, Farmdata Ltd or any other person involved in the creation, production, or distribution of Farmdata software shall not be liable for any claim by you or any other party for damages arising out of the use, inability to use quality or performance of such Farmdata software and user manual, based upon principles of contract warranty, negligence, strict liability for the negligence of Farmdata Ltd or other tort, branch of any statutory duty, principles of indemnity or contribution, the failure of any remedy to achieve its essential purpose, or otherwise.

This does not affect your statutory rights.

Contents

Cattledata – Agrident AWR100/200	2
Chapter 1 Cattledata Setup.....	3
1.1 Reader Settings	4
Chapter 2 Upload from Reader.....	5
2.1 Upload from Reader.....	5
Chapter 3 Using Read Tags in Cattledata.....	6
3.1 Amend Read Animals	6
3.2 Using Readings in Occurrences	7

Cattledata – Agrident AWR100/200

The object of this document is to explain the link and operation of the Agrident AWR Readers and Cattledata. It is divided into three sections, each explained in a chapter.

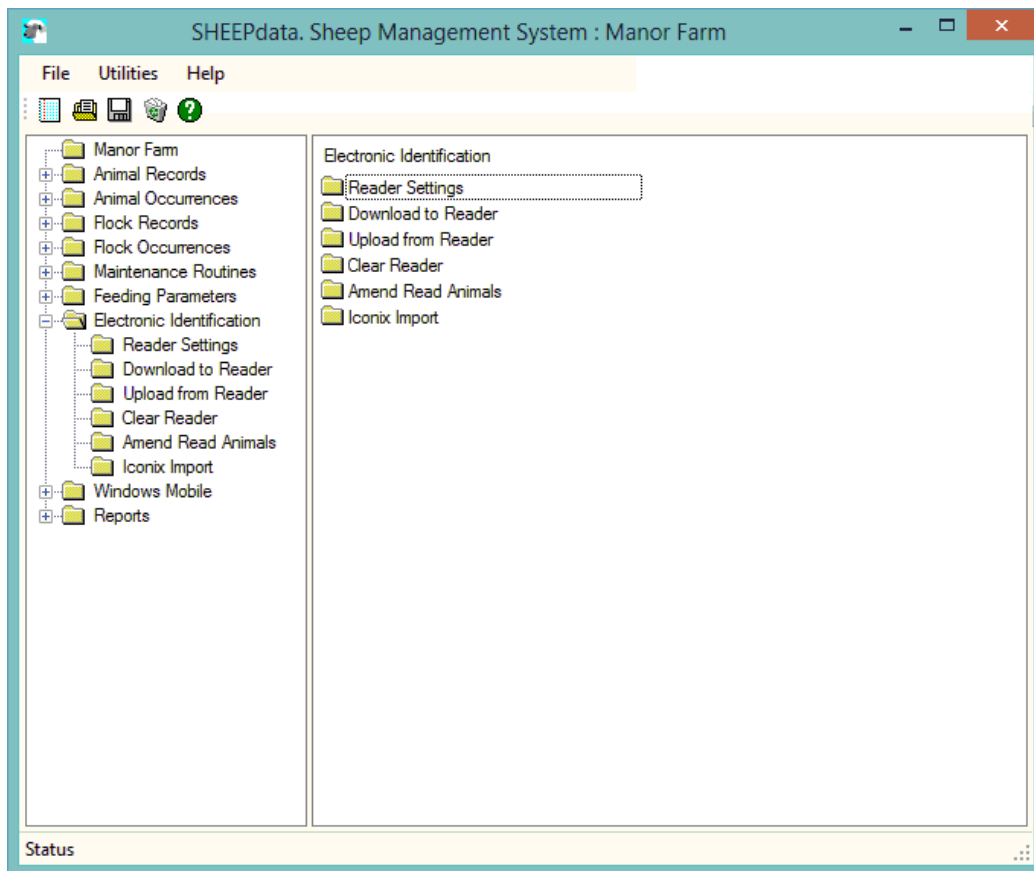
1. Cattledata Setup
2. Upload from Reader
3. Using Readings in Occurrences

It is intended to be a guide to the main procedures you may wish to use with Cattledata.

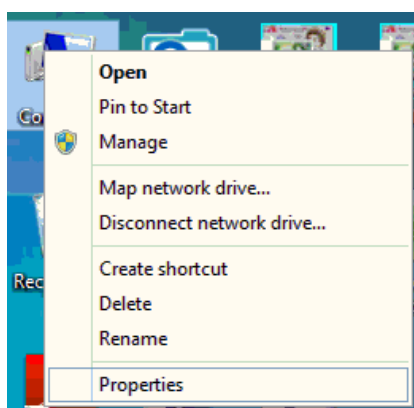
For detailed operation of the AWR100/200 reader please use in conjunction with the Agrident manuals.

These are available at www.agrident.com Go to Support and Software downloads.

When Cattedata has the EID Module enabled the menu options below become available. These enable communication with a range of readers.



The AWR communicates through a serial com port. This may require a USB/Serial port converter on some machines. This com port has be identified and set in Cattedata. To find the com port:-



Right Click on the Computer Icon on the screen or click on the Start button and right click on the Computer Icon.

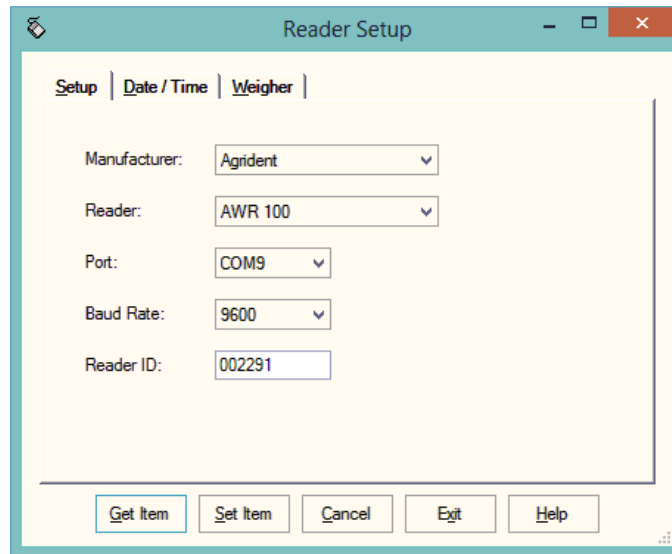
Click Properties.

Click Device Manager

Click on Ports

Note the Com No. of the USB Serial Port

- ▶ Memory technology devices
- ▶ Mice and other pointing devices
- ▶ Monitors
- ▶ Network adapters
- ▶ Other devices
- ▶ Ports (COM & LPT)
 - ▶ USB Serial Port (COM9)
- ▶ Print queues
- ▶ Processors
- ▶ Sensors
- ▶ Software devices



Manufacturer Set as Agident.

Reader Set as AWR100 (includes AWR200)

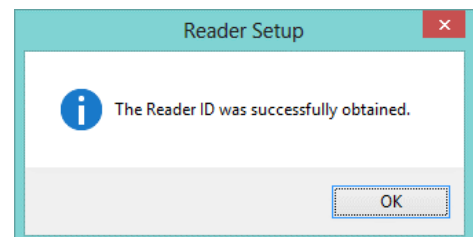
Port. Select the port from the drop-down.

Baud Rate Set as 9600

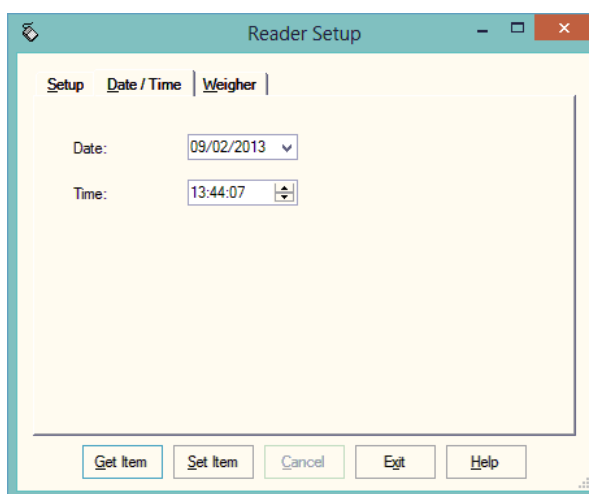
Reader ID When "Get Item" is used the reader's ID is displayed

Click "Get Item" to check the connection. Reader must be switched on.

The screen on the right indicates a successful connection.



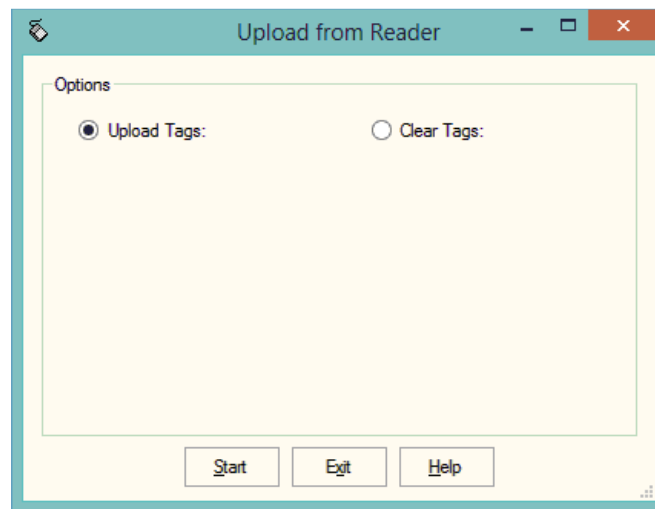
Use Date/Time to Check and Set the Date and time on the APR



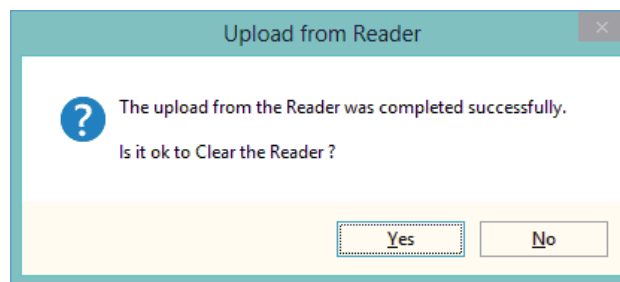
Once the settings are complete you can use Download to Reader to load the APR.

2.1 Upload from Reader

This transfers the information recorded on the AWR back to the PC.



- 1 Upload Tags - Click Start to transfer data from the reader to the PC.



If you wish to clear the recorded data from the reader click Yes.

- 2 Clear Tags – Will clear the recorded data from the reader. Take care that you have transferred all the data you need before doing this.

The recordings are imported into a holding section of the program. They stay in this holding section until they are used in an occurrence routine.

To check or amend the data in the holding section go to Amend Read Animals.

3.1 Amend Read Animals

Imported reader data can be checked here.

Amend Read Animals

Details
This routine can be used to Change the Group or Clear any Tags and Histories uploaded from the Reader.

Items: New Group:

Animals

Type: Include: Selected: Available: Total:

Date	Electronic Tag	Group	Occurrence	Value
13/02/2014	982000152202768	1	Other	
13/02/2014	982000151147121	1	Other	

The recordings are shown in the order in which they were read.

The Group separates the lots as read on the reader.

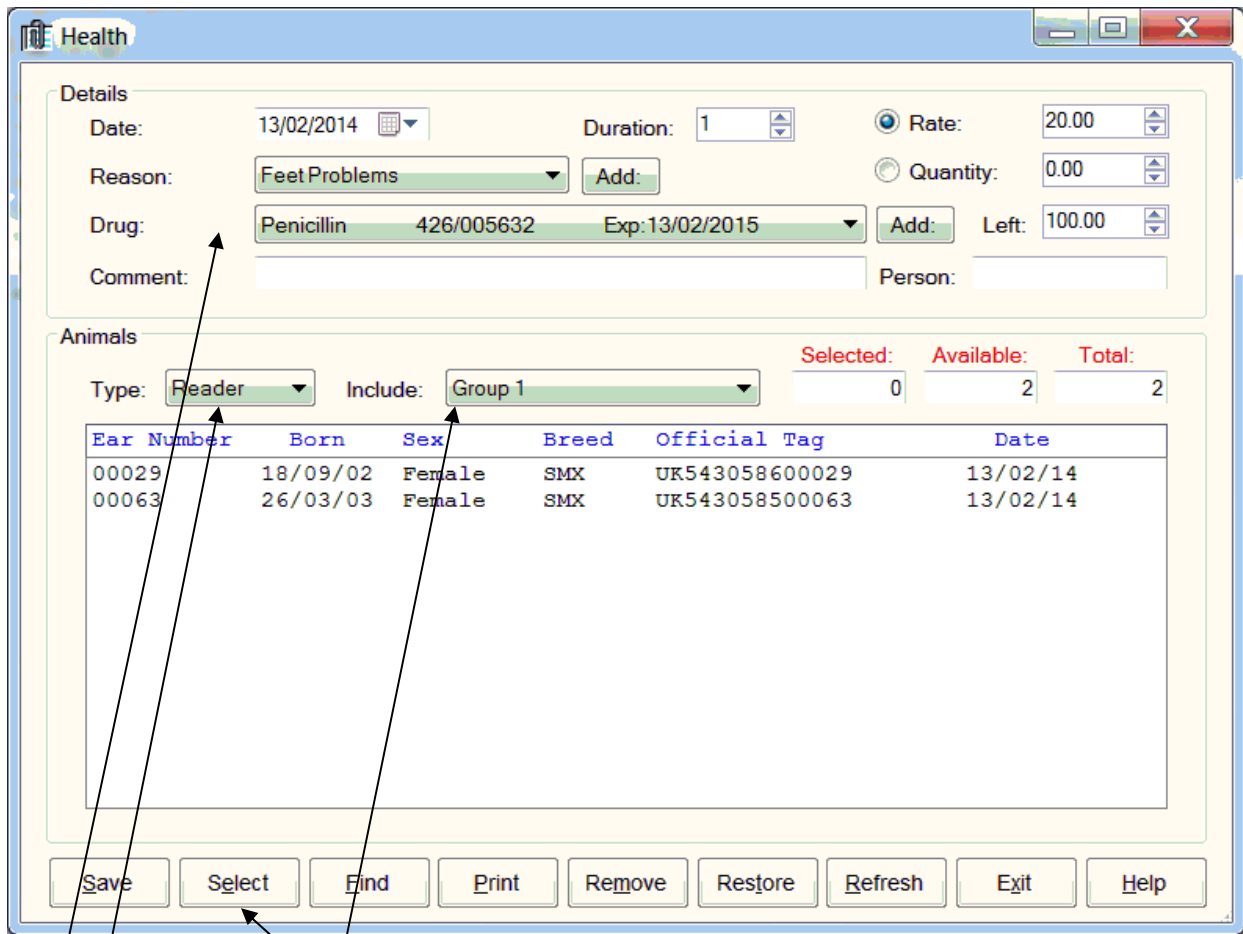
Groups can be changed by selecting the required animals, changing the number in New Group and saving.

New Tag - Tags which are not recognised as already in the system are labelled as "New Tag".

Any errors or unwanted readings can be highlighted and deleted.

Numbers are removed when they are used in the relevant occurrence.

Occurrences recorded on the reader should be imported into the records in the appropriate occurrence routine.



Go into the required occurrence.

Set the Details for this batch of tags.

Select Reader in Type. In Include you can select a Group from the reader.

The tags will be shown in the screen. Click Select to select all the animals. Deselect any you don't want to record by clicking on them.

Click Save and the records will be updated.