



AgriRent APR350/380/500 Manual

Copyright Information

© 1978-2017, Farmdata Limited
Westertown
Rothienorman
Aberdeenshire
AB51 8US

The information contained in this manual and the accompanying software program are copyrighted and all rights are reserved by Farmdata Ltd.

Farmdata Ltd reserve the right to make periodic modifications of this product without the obligation to notify any person or entity of such revision. Copying, duplicating, selling or otherwise distributing any part of this product without the prior written consent of an authorised representative of Farmdata Ltd are prohibited.

Information contained in this document is subject to change without notice and does not represent a commitment on the part of Farmdata Ltd. The software described in this manual is furnished under a license agreement. The software may be used or copied only in accordance with the terms of this agreement.

Limitations of Liability

In no event will Farmdata Ltd or any other person involved in the creation, production or distribution of the Farmdata software be liable to you on account of any claim for any damages, including any lost profits, lost savings, or other special, incidental, consequential, or exemplary damages, including but not limited to any damages assessed against or paid by you to any third party, arising out of the use, inability to use, quality or performance of such Farmdata software and user manual, even if Farmdata Ltd or any such other person or entity has been advised of the possibility of such damages, or for any claim by any other party. In addition, Farmdata Ltd or any other person involved in the creation, production, or distribution of Farmdata software shall not be liable for any claim by you or any other party for damages arising out of the use, inability to use quality or performance of such Farmdata software and user manual, based upon principles of contract warranty, negligence, strict liability for the negligence of Farmdata Ltd or other tort, branch of any statutory duty, principles of indemnity or contribution, the failure of any remedy to achieve its essential purpose, or otherwise.

This does not affect your statutory rights.

Contents

Sheepdata – Agrident APR500	3
Chapter 1 Sheepdata Setup	4
1.1 Reader Settings	5
Chapter 2 Classic Mode.....	6
2.1 Download to Reader	6
2.2 Hot Key Setup.....	7
Scale Read Option	8
2.3 Speed Mode Setup.....	9
2.4 Upload from Reader.....	11
Amend Read Animals	12
Using Readings in Occurrences	13
Chapter 3 Task Mode	14
3.1 Download to Reader	14
Code List Selection	15
Task Selection.....	16
3.2 Castration – Animal Records.....	17
3.3 Culling - Animal Record.....	18
3.4 Flock Purchase – Flock Records.....	19
3.5 Flock Sale – Flock Records.....	21
3.6 Health - Animal Records.....	23
3.7 Lambing – Not Tagging the Lambs - Add Lambs to the Flock Records - Animal Records	24
3.8 Lambing – Tagging the Lambs - Create Individual Lamb Records - Animal Records.....	26
3.9 Purchase – Animal Records.....	28
3.10 Sale – Animal Records.....	30
3.11 Scanning Results – Animal Records.....	32
3.12 Service – Animal Records	34
3.13 Weighing – Animal Records	35
3.14 Weight from Scale – Animal Records.....	36
3.15 Upload from Reader.....	37

The object of this document is to explain the link and operation of the Agrident APR500 and Sheepdata. It is divided into three sections, each explained in a chapter.

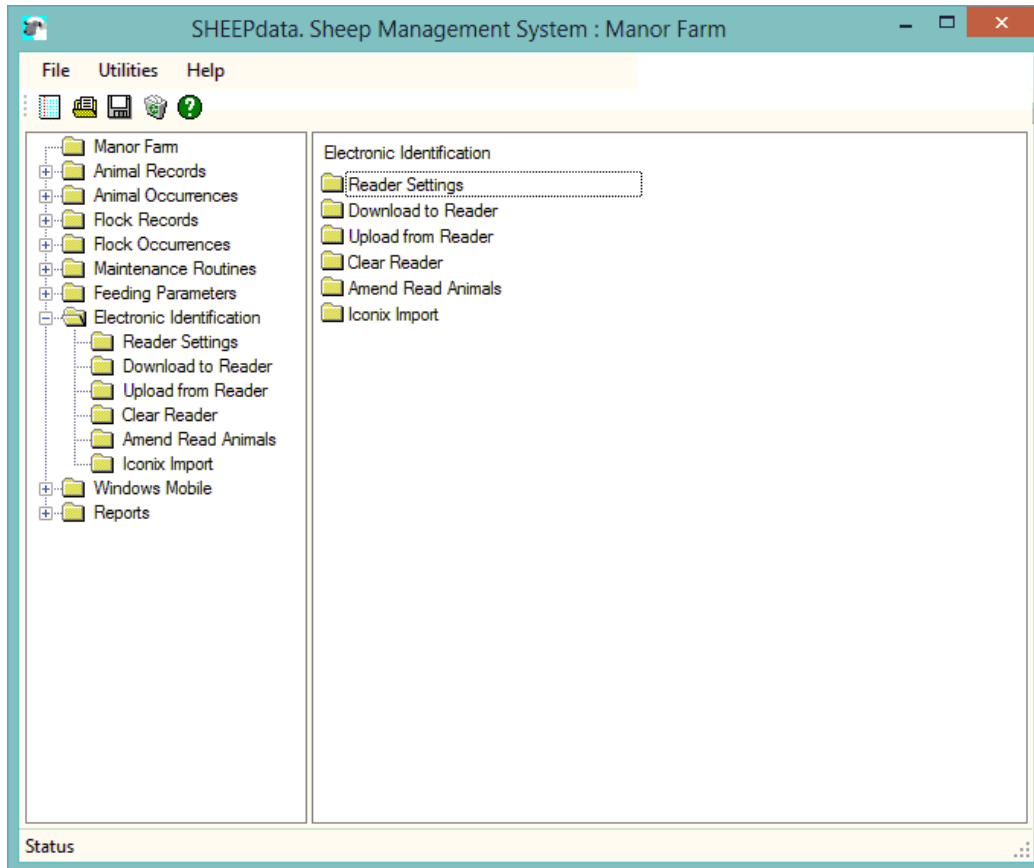
1. Sheepdata Setup
2. APR Classic Mode
3. APR Task Mode

It is intended to be a guide to the main procedures you may wish to use with Sheepdata.

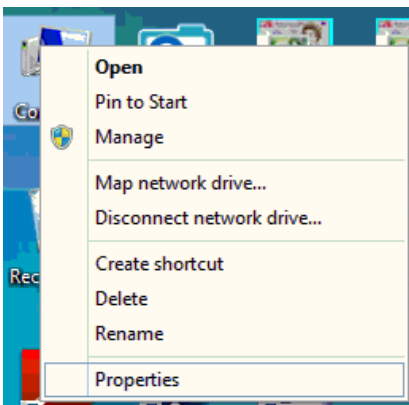
For detailed operation of the APR500 reader please use in conjunction with the Agrident manuals.

These are available at www.agrident.com Go to Support and Software downloads.

When Sheepdata has the EID Module enabled the menu options below become available. These enable the communication with a range of readers.



The APR500 communicates through a com port. This com port has be identified and set in sheepdata. To find the com port :-



Right Click on the Computer Icon on the screen or click on the Start button and right click on the Computer Icon.

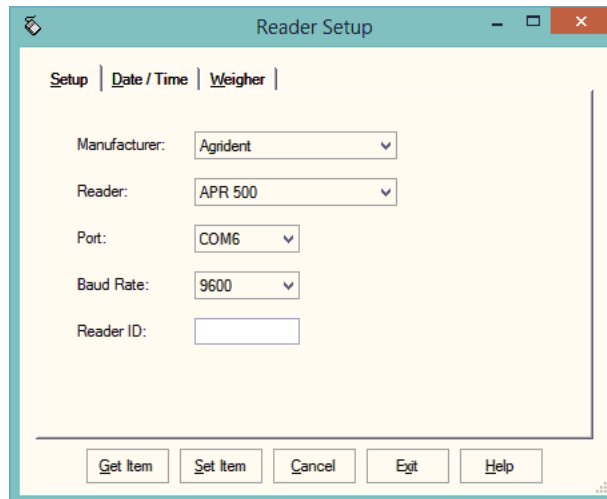
Click Properties.

Click Device Manager

Click on Ports

Note the Com No. of the APR500





Set Manufacturer as Agrident.

Set Reader. For **Classic Mode**, to use **Hotkeys, Speed Mode and Race Mode** set as APR350 or APR380
For **Task Mode** set as APR500

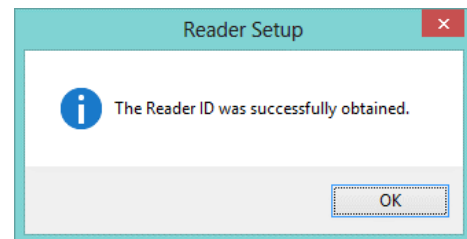
Port. Select the port from the drop-down.

Baud Rate Set as 9600

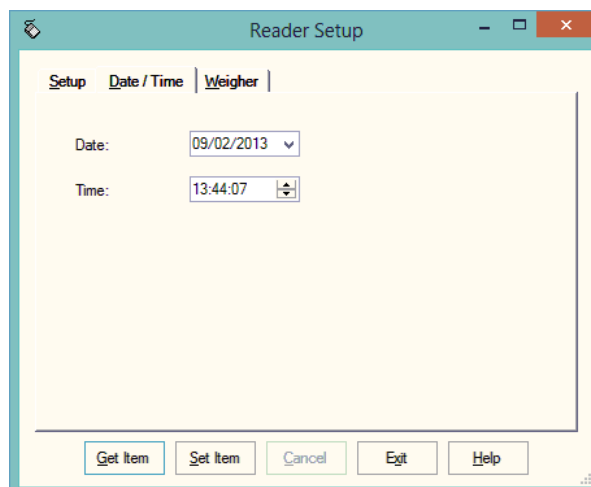
Reader ID Not available for the Agrident APR

Click Get Item to check the connection.

The screen on the right indicates a successful connection.



Use Date/Time to Check and Set the Date and time on the APR

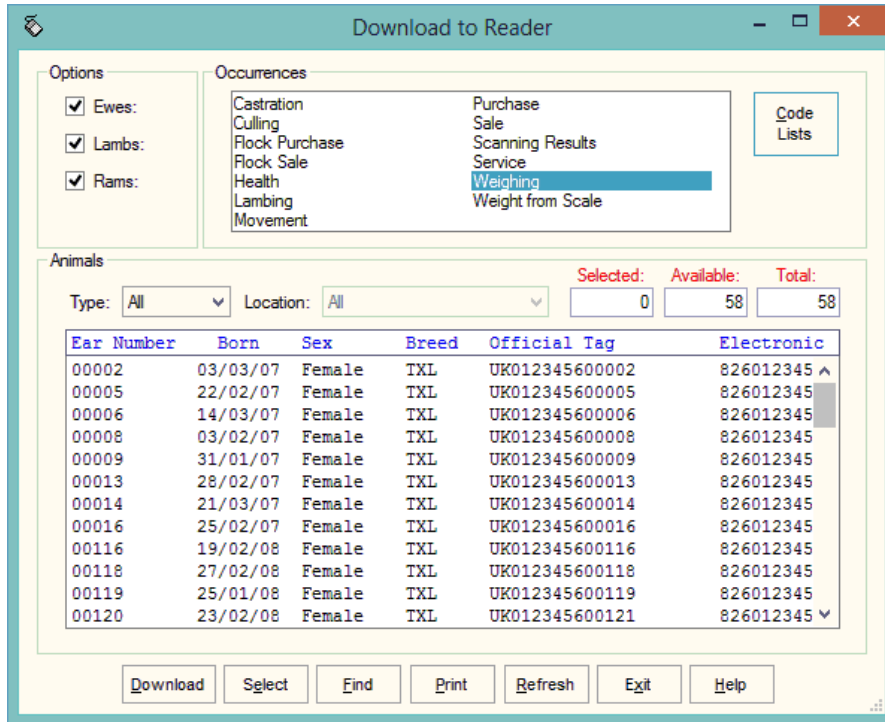


Once the settings are complete you can use Download to Reader to load the APR.

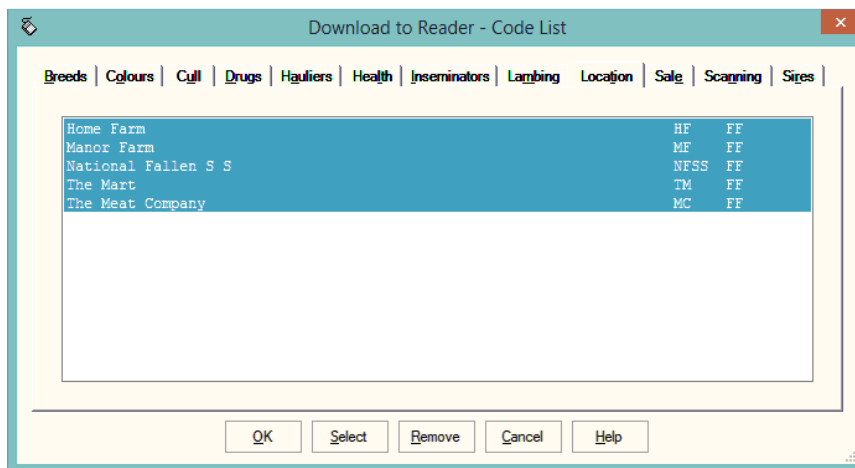
Classic Mode uses the simple system of recording a single action or a single action plus a quantity against a tag. This is transferred back to Sheepdata and used in occurrences to update the animal records.

2.1 Download to Reader

In Reader Settings set the reader as APR350.



The only option in the occurrences that you may want to use is Weighing. All the other options should be selected from the code lists.



Select the actions you wish to use from the options. The selected options are remembered.

Click Ok

Select the Animals to be used in options. Individual groups of animals can be selected under Type.


Click Download to send your selection to the Reader.

2.2 Hot Key Setup

Two hotkeys are available on the APR500,  and . These keys trigger a tag read and can be set to record in various ways.

Press 


```
OPTIONS
→ Operation
  Speed Mode
  Race Mode
  Data
```

Select Operation and press 


```
OPERATION MENU
→ Hotkey Config
  Presets
  No tag mode
  New Group
```

Select Hotkey Config and press 


```
OPERATION: Hotkeys
→ Hotkey A
  Hotkey B
```

Select the Hotkey to configure and press 

```
OPERATION: Hotkey A
→ Hotkey mode
  Action code list
  Search mode
  Weight from scale
```

Select the Hotkey mode and press 

```
Hotkey A Operation
→ No Action Code
select option! f↓
```

Select the action option required and press 

The options are: (Please refer to Agrident manual for more detailed information)

No Action Code – Simply records the number.

AC Ask – When a tag is read you will get the list of actions which you can select from.

AC Ask Plus – as for AC Ask but a quantity can be added to each read.

AC Auto – When a tag is read the action selected from the action code list is used. The action is selected from the Action Code List after selecting this option.

AC Auto Plus – as for AC Auto but you enter a numeric value also.

Assign Ask – This allows you set the Alias for the read tag. It can be an alpha numeric format

Assign Ask Save – as Assign Ask but it auto saves.


When Mode has been selected press 


If AC Auto or AC Auto Plus has been selected:

```
OPERATION: Hotkey A
Hotkey mode
➔ Action code list
Search mode
Weight from scale
```

Select Action Code List and press 

```
Hotkey A Actioncode
➔ 4 E-Home Farm
select action code↑↓
```

Select the action code you want and press 

Press  to return out of the menus.

```
10.02.13 15:23
AC auto   Scale
E-Home Fa Read
```

Hotkey A is now set to record Home Farm Movement on each read.

Scale Read Option


```
OPERATION: Hotkey A
Hotkey mode
Action code list
Search mode
➔ Weight from scale
```

Hotkey B has been set to Weight from Scale in the Hotkey Operation

This is used to record the weight from a connected Weighhead.

Press 

Read the tag. When the weight settles on the scale press . The weight will be recorded on the reader.


Press  to accept the weight.

2.3 Speed Mode Setup

Speed Mode is used to record tags and actions quickly. Instead of pressing a Hotkey for each read it uses a permanent read mode to record tags.

Press 

```
OPTIONS
Operation
→ Speed Mode
Race Mode
Data
```

Select Speed Mode and press 

```
Speed Mode
→ Start Speed Mode
New Group
Action Code
Action Code Plus
```

Before Starting Speed Mode some options are available.


New Group will start a new Batch on the reader.

```
Group separator
GROUP 1
enter group name!
```

You can enter a particular name if required or simply use a number.


AC Auto – When a tag is read the action selected from the action code list is used.

```
SPEED MODE: AC Auto
→ 6 E-The Mart
select action code!
```

Select the occurrence required and press 

AC Auto Plus – adds a value to the above action.


```
SPEED MODE: AC Plus
ac Plus: 10
enter action plus!
```

Enter the value to be added to the value and press 

Select Start Speed Mode to begin reading.

```
Speed Loop
ID count: 0
```

Speed Loop is now active. The Reader is in constant read mode and will record each tag contacted.

To stop/pause the Speed Loop press  twice.



To restart the Speed Loop press

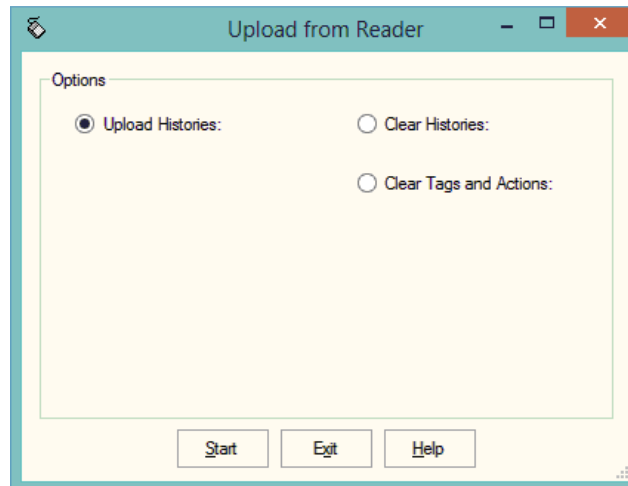


To stop the Speed Loop

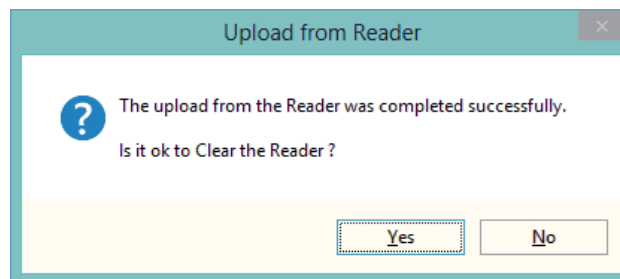


2.4 Upload from Reader

This transfers the information recorded on the APR500 back to the PC.



- 1 Upload Histories - Click Start to transfer data to records.



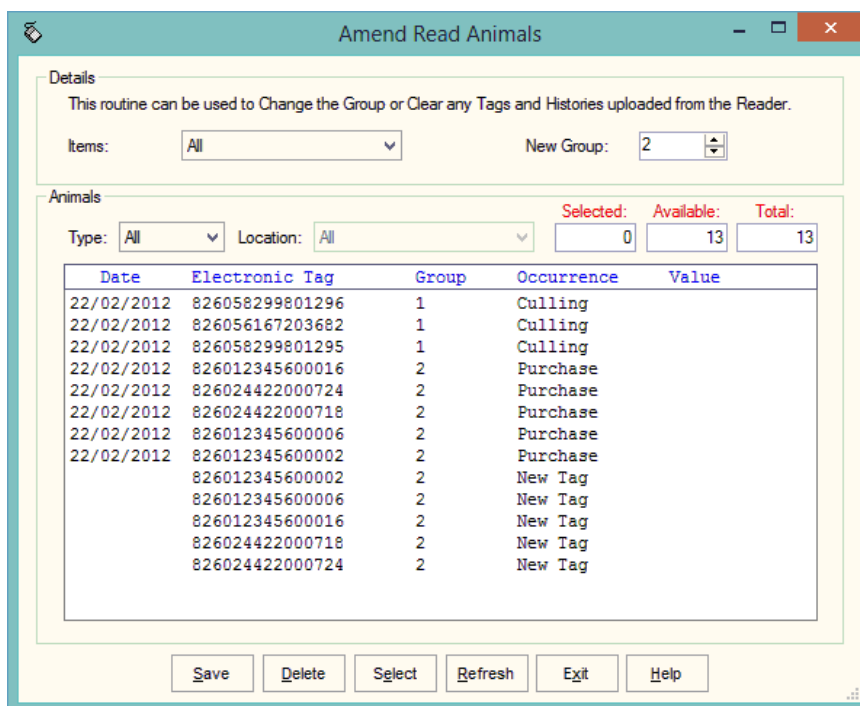
If you wish to clear the recorded data from the reader click Yes.

- 2 Clear Histories – Will clear the recorded data from the reader. Take care that you have transferred all the data you need before doing this.
- 3 Clear Tags and Actions – Will Clear any animal records and action lists from the reader. Download will need to be used to repopulate the reader.

The recordings are imported into a holding section of the program. They stay in this holding section until they are used in an occurrence routine.

To check or amend the data in the holding section go to Amend Read Animals.

Imported reader data can be checked here.



The recordings are shown in the order in which they were read.

The Group separates the lots as read on the reader.

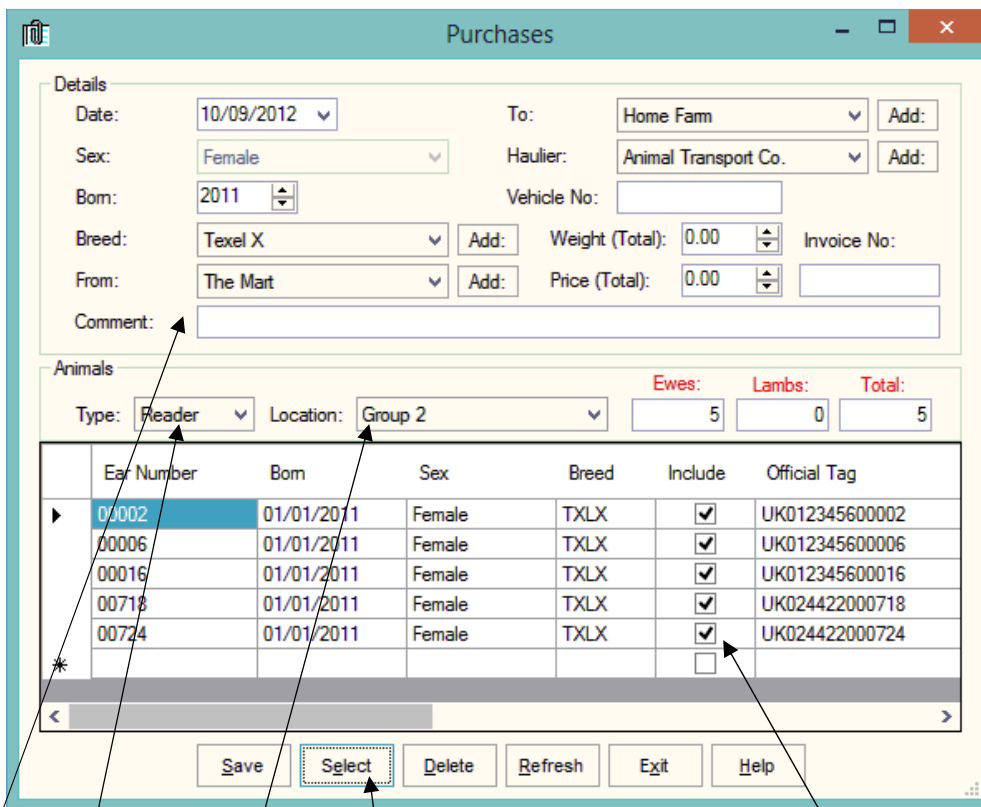
Groups can be changed by selecting the required animals, changing the number in New Group and saving.

New Tag - Tags which are not recognised as already in the system are labelled as "New Tag". Regardless of which action has been recorded against them they will only be available in the Purchase routines.

Any errors or unwanted readings can be highlighted and deleted.

Numbers are removed when they are used in the relevant occurrence.

Occurrences recorded on the reader should be imported into the records in the appropriate occurrence routine.



Go into the required occurrence.

Set the Details for this batch of tags.

Select Reader in Type. In Location you can select a Group from the reader.

The tags will be shown in the screen. Click Select to select all the animals. Remove the tick in include in any you don't want to record.

Click Save and the records will be updated.

Set Reader as APR500 to load Task Mode

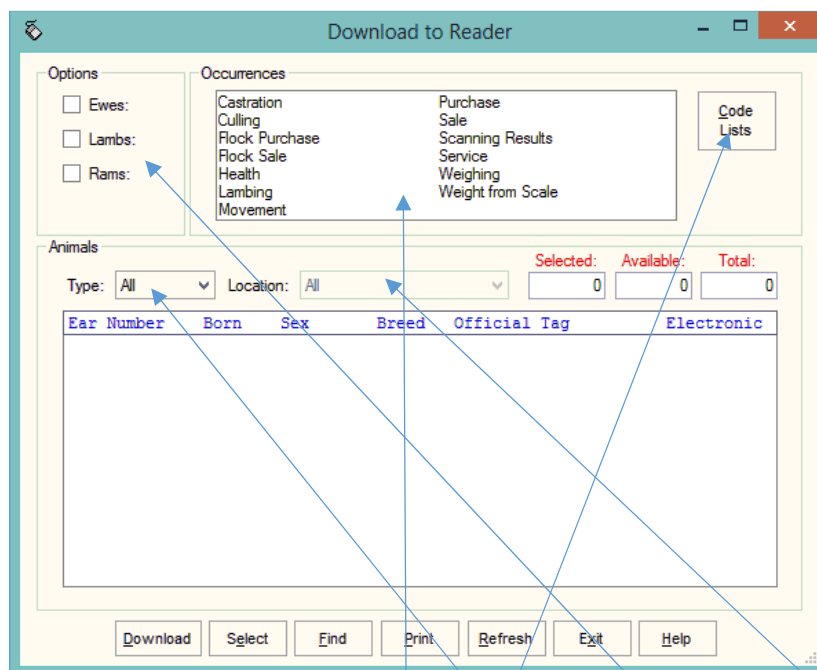
Task Mode uses pre-set routines to capture data. These routines are written by Farmdata.

Up to 9 “Tasks” can be loaded onto the reader at any one time. Sheepdata currently has 13 Tasks available.

Each task requires several data entries to be made. These can be manual entries, selections from lists or data captured by the reader. These entries make up the complete information required to make a full entry of an occurrence in sheepdata. On upload from the reader the individual animals’ records are updated without any further user input.

3.1 Download to Reader

Select the Animals, Occurrences (Tasks) and Code (Selection) Lists to put on the reader.



Animal Selection

The animal records you are going to work with should be selected under Options.

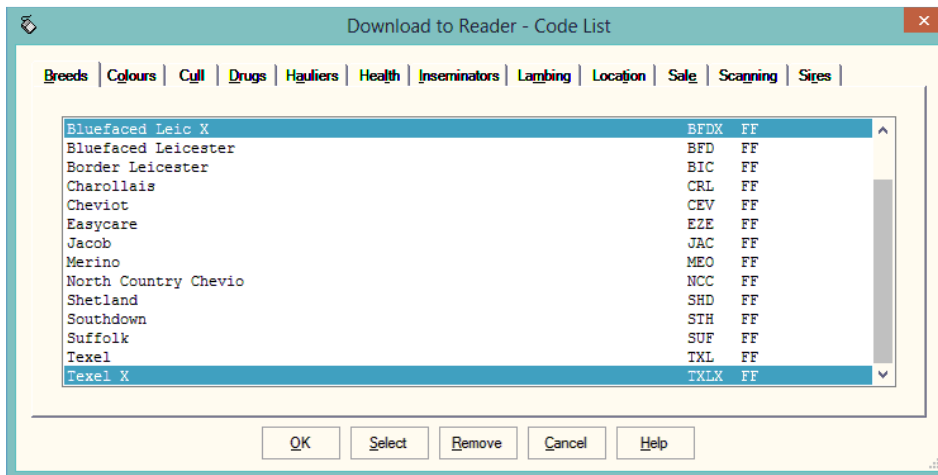
If you want to select a particular group of animals select Group in Type and then the group in Location.

The Tasks you require should be highlighted in Occurrences.

The required Selection Lists should be selected in Code Lists as described below.

Code List Selection

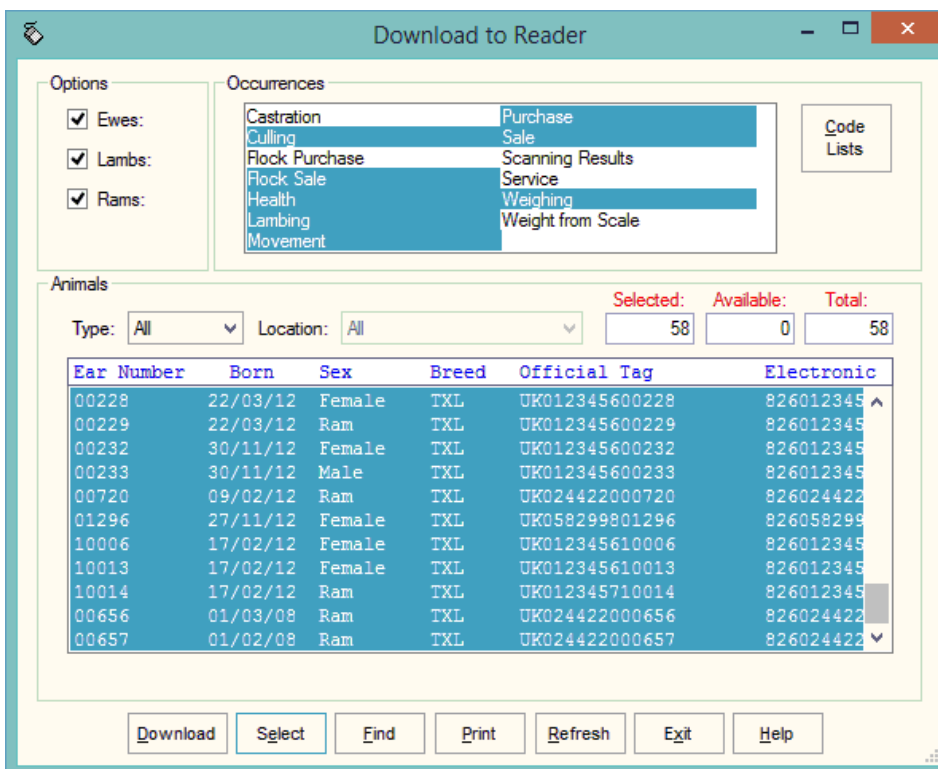
Many of the Tasks require entries to be made from selection lists in sheepdata. The Health Treatment Task obviously require Drugs and Health options.



For each required list click into the relevant tab and highlight the entries you want to be able to select from on the reader.

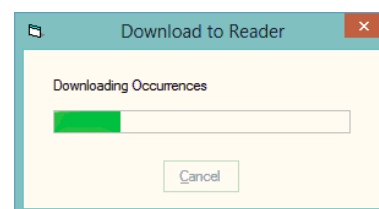
The Lists which are required for each task is detailed in the relevant sections later in the manual.

The selections are maintained by the program and can be amended as required.



Once your selections have been made Click **Download**.

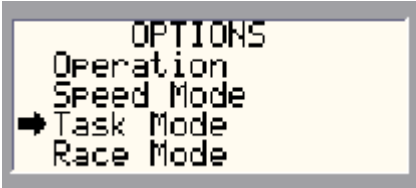

When Download is complete you may disconnect the reader.

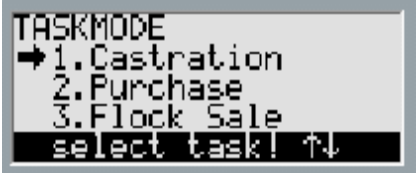



Task Selection

To use a Task on the APR500

Select 

Scroll down to Task Mode  and press 

Scroll to the task required  and press 

Start recording by selecting  and press 

Other options on this screen

Show Capacity: Gives an indication of the number of records the machine can record.

Select Task: Returns to the screen with the list of available tasks.

Browse Datasets: Shows the list of records already created in task mode.

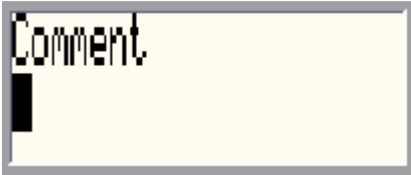
Where you know the number of the Task on your list you can access it directly by holding down that Number on the keypad. On the above selection of tasks Lambing would be No.4 on the list. Hold Down Key 4 and you will go directly into the Lambing Task.

3.2 Castration – Animal Records

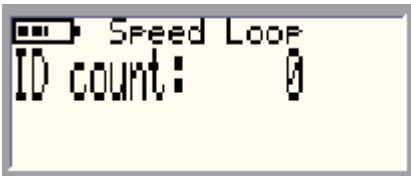
No Selection Lists are required.



Today's date is entered, change this if necessary and press



Enter an comment required using the keypad and press



Speed Loop is now active. The Reader is in constant read mode and will record each tag contacted.

To stop/pause the Speed Loop press



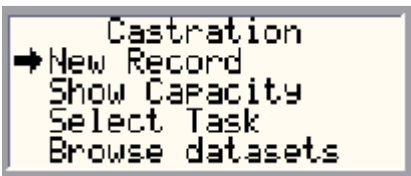
twice.



To restart the Speed Loop press



To stop the Speed Loop



To leave task mode press

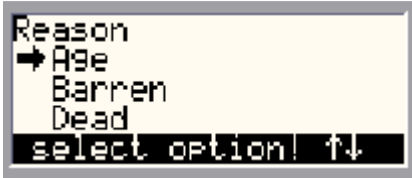


twice.

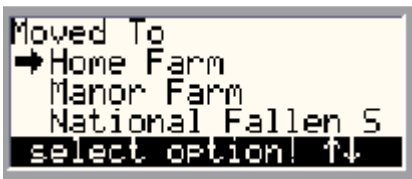
Selection Lists required are Cull, Location and Haulier.



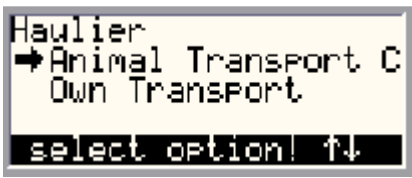
Today's date is entered, change this if necessary and press



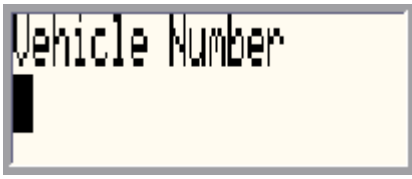
Select the reason for culling using the keypad and press



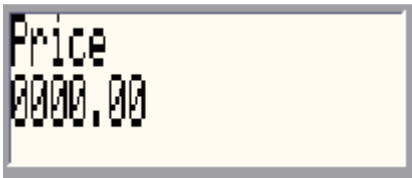
Select where moving to using the keypad and press



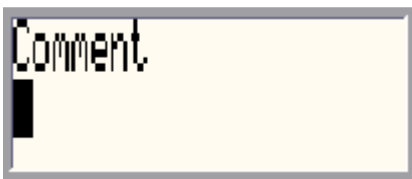
Select the haulier using the keypad and press



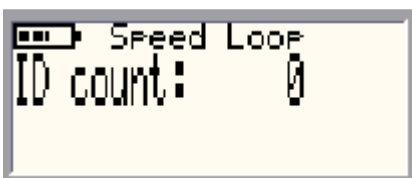
Enter the Vehicle Number using the keypad and press



Enter the price using the keypad and press



Enter an comment required using the keypad and press



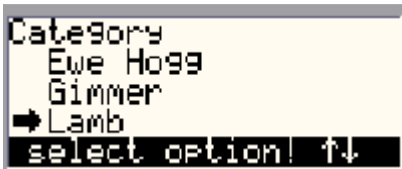
Speed Loop is now active. The Reader is in constant read mode and will record each tag contacted.

To stop/pause the Speed Loop press  twice.

Selection Lists required are Breed, Location and Haulier



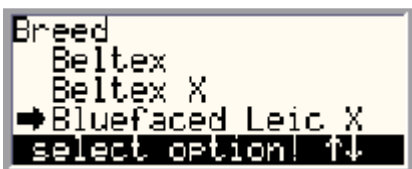
Today's date is entered, change this if necessary and press



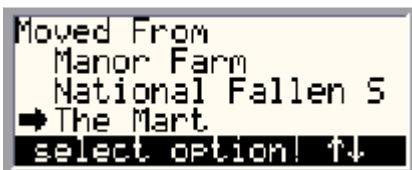
Select the type of animal using the keypad and press



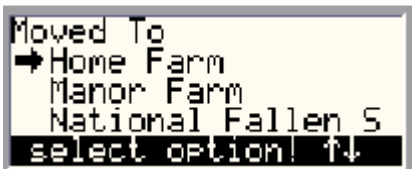
Enter the year of birth using the keypad and press



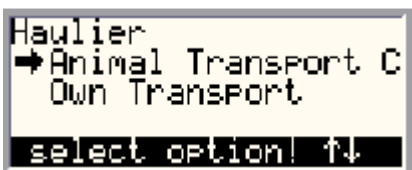
Select the breed of animal using the keypad and press



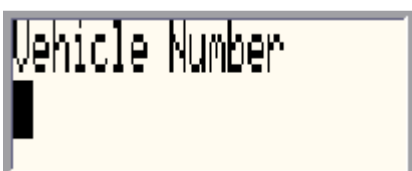
Select where moved from using the keypad and press



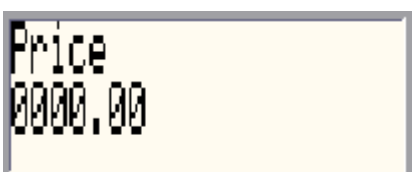
Select where moved to using the keypad and press



Select the haulier using the keypad and press

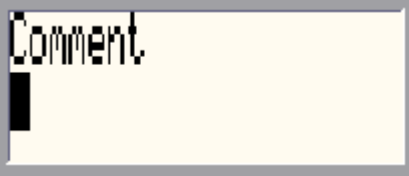


Enter the Vehicle Number using the keypad and press

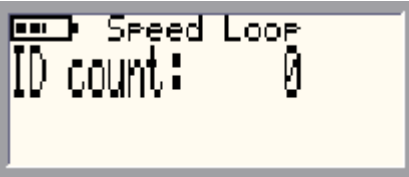


Enter the price using the keypad and press





Enter an comment required using the keypad and press



Speed Loop is now active. The Reader is in constant read mode and will record each tag contacted.

To stop/pause the Speed Loop press

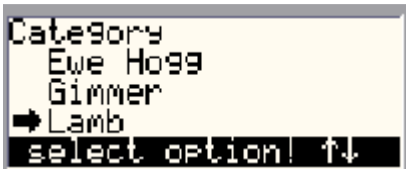


twice.

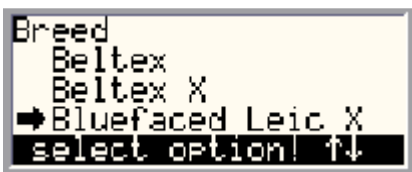
Selection Lists required are Breed, Location and Haulier



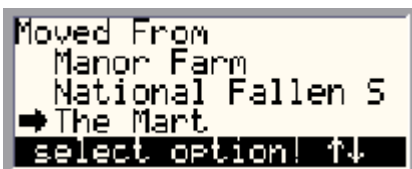
Today's date is entered, change this if necessary and press



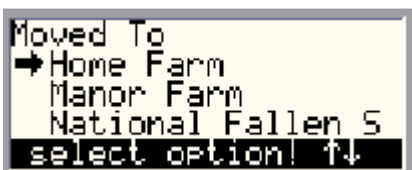
Select the type of animal using the keypad and press



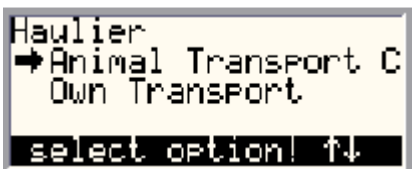
Select the breed of animal using the keypad and press



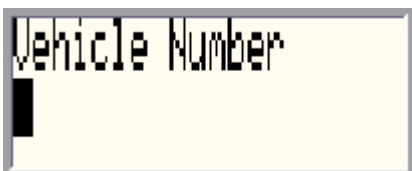
Select where moved from using the keypad and press



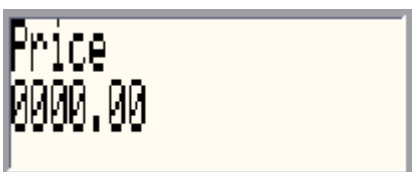
Select where moved to using the keypad and press



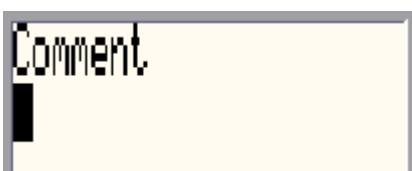
Select the haulier using the keypad and press



Enter the Vehicle Number using the keypad and press

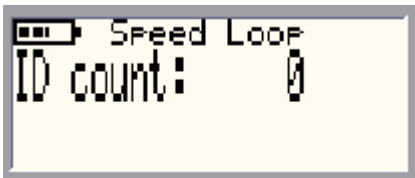


Enter the price using the keypad and press




Enter an comment required using the keypad and press





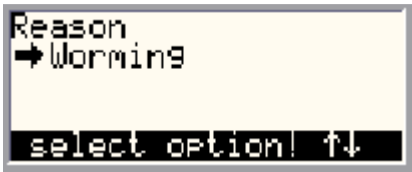
Speed Loop is now active. The Reader is in constant read mode and will record each tag contacted.

To stop/pause the Speed Loop press  twice.

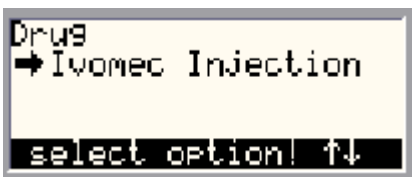
Selection Lists required are Health and Drug.



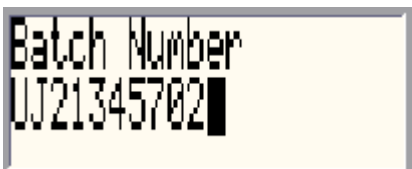
Today's date is entered, change this if necessary and press



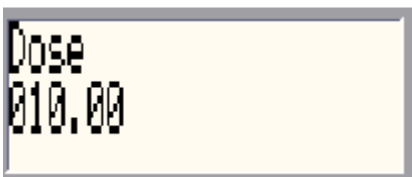
Select the reason for the treatment using the keypad and press



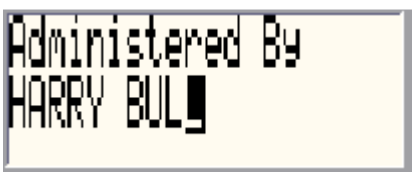
Select the drug being administered using the keypad and press



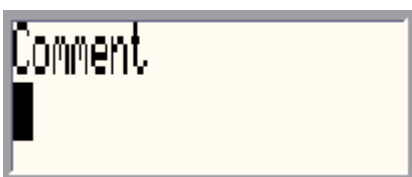
Enter the Batch Number using the keypad and press



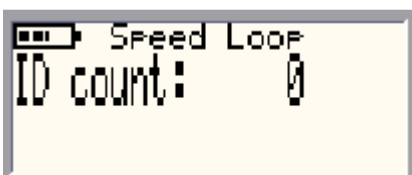
Enter the dosage per animal using the keypad and press




Enter the name of the operator using the keypad and press



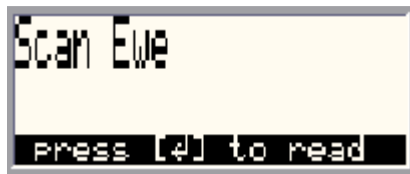
Enter an comment required using the keypad and press







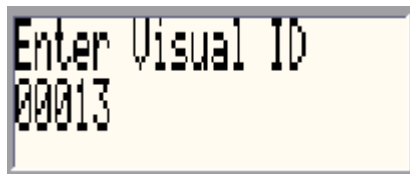
Speed Loop is now active. The Reader is in constant read mode and will record each tag contacted.

To stop/pause the Speed Loop press  twice.

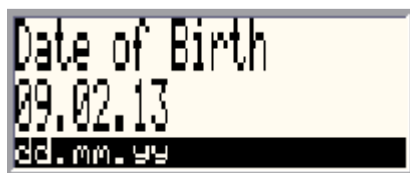
Selection Lists required are Sire, Lambing.




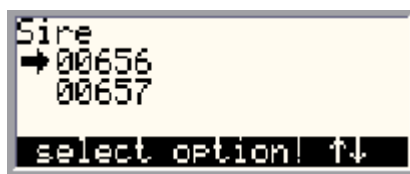
Press the  and read the ewe's tag. If the tag cannot be read, wait for the read to finish. Press the  when it says reading failed. Press the  and when it says Leave Empty press .




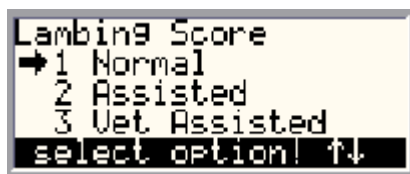
You can now enter the management/ear no. of the ewe Press the .




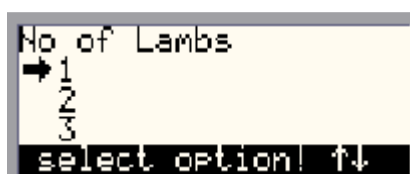
Enter the Date of Birth. Today's date can be changed. Press the .




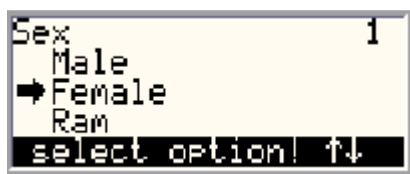
Select the sire using the keypad and press .




Select the lambing score using the keypad and press .



Select the number of lambs born using the keypad and press .



Select the first lamb's sex using the keypad and press .

Repeat the last sage for each lamb born.

After the last lamb detail is entered



Press



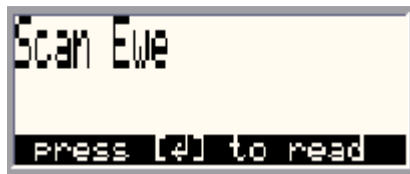
to accept the lambing recording. Press







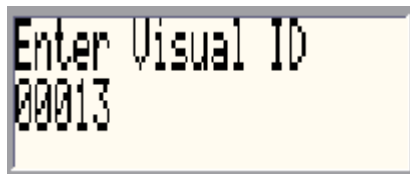
to cancel the


lambing.

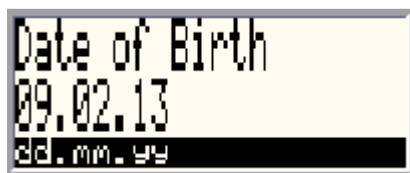
Selection Lists required are Sire, Lambing.




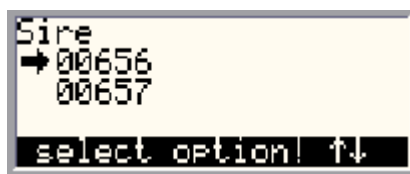
Press the  and read the ewe's tag. If the tag cannot be read, wait for the read to finish. Press the  when it says reading failed. Press the  and when it says Leave Empty press .




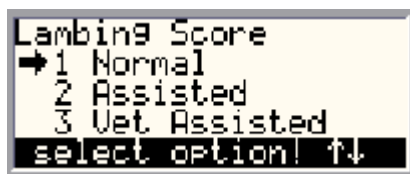
You can now enter the management/ear no. of the ewe Press the .




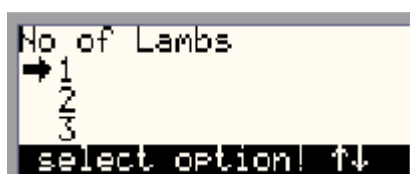
Enter the Date of Birth. Today's date can be changed. Press the .




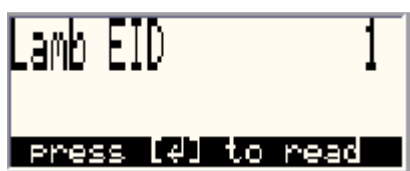
Select the sire using the keypad and press .




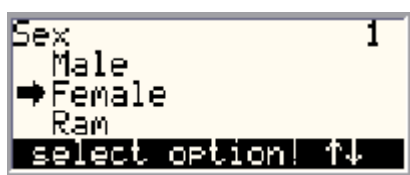
Select the lambing score using the keypad and press .




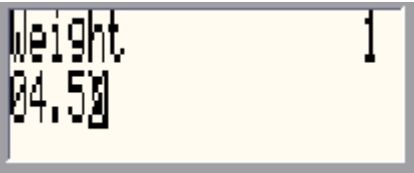
Select the number of lambs born using the keypad and press .



Press  and scan the first lamb's EID.



Select the first lamb's sex using the keypad and press .



Enter the first lamb's birth weight using the keypad and press



Repeat the last three stages for each lamb.

After the last lamb detail is entered



Press



to accept the lambing recording. Press



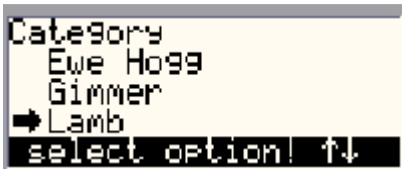
to cancel the

lambing.

Selection Lists required are Breed, Location and Haulier



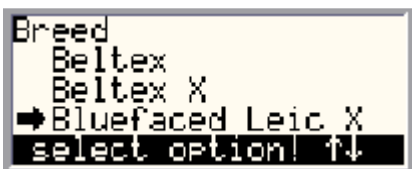
Today's date is entered, change this if necessary and press



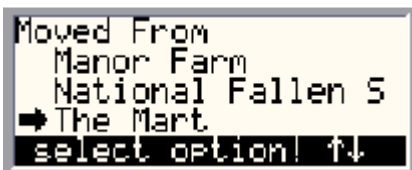
Select the type of animal using the keypad and press



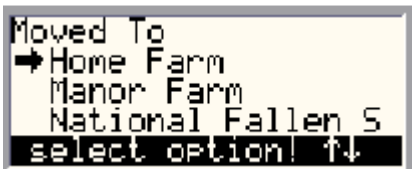
Enter the year of birth using the keypad and press



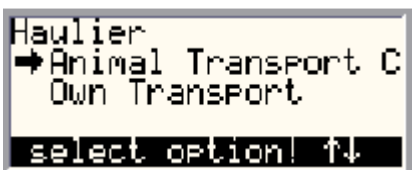
Select the breed of animal using the keypad and press



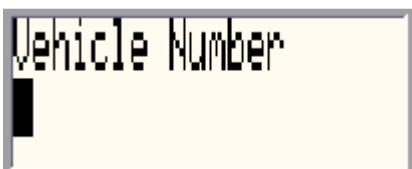
Select where moved from using the keypad and press



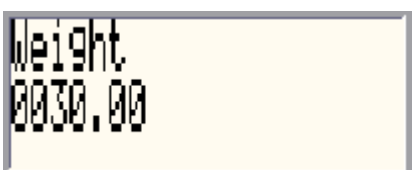
Select where moved to using the keypad and press



Select the haulier using the keypad and press



Enter the Vehicle Number using the keypad and press



Enter the Animals' weight using the keypad and press



Invoice Number

Enter the Invoice number for this purchase using the keypad and press



Price
0000.00

Enter the price using the keypad and press




Comment
█

Enter an comment required using the keypad and press



Speed Loop
ID count: 0

Speed Loop is now active. The Reader is in constant read mode and will record each tag contacted.

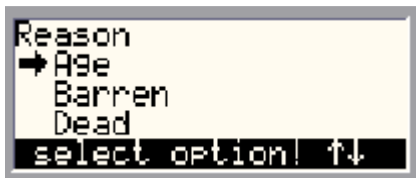
To stop/pause the Speed Loop press  twice.

Selection Lists required are Reason, Location and Haulier



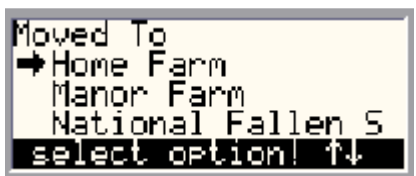
Date
09.02.13
dd.mm.yy

Today's date is entered, change this if necessary and press



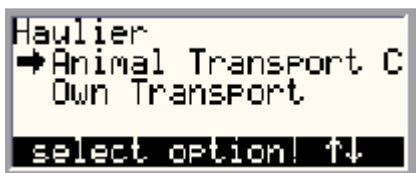
Reason
→ Age
Barren
Dead
select option! ↑↓

Enter the reason using the keypad and press



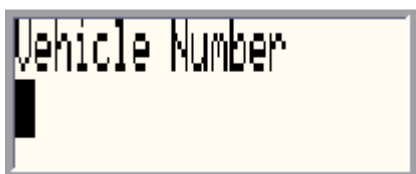
Moved To
→ Home Farm
Manor Farm
National Fallen 5
select option! ↑↓

Select where moved to using the keypad and press



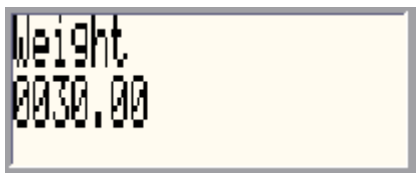
Haulier
→ Animal Transport C
Own Transport
select option! ↑↓

Select the haulier using the keypad and press



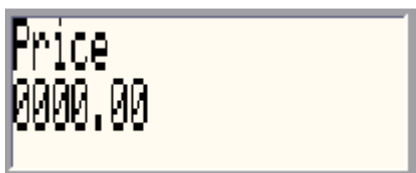
Vehicle Number
█

Enter the Vehicle Number using the keypad and press



Weight
0030.00

Enter the Animals' weight using the keypad and press



Price
0000.00

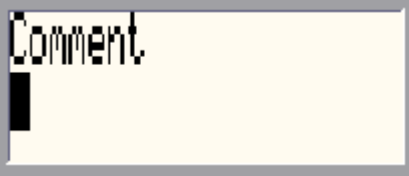
Enter the price using the keypad and press



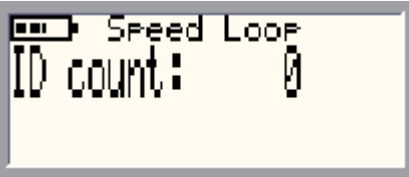
Grade
█

Enter the grade using the keypad and press





Enter any comment required using the keypad and press



Speed Loop is now active. The Reader is in constant read mode and will record each tag contacted.

To stop/pause the Speed Loop press







twice.

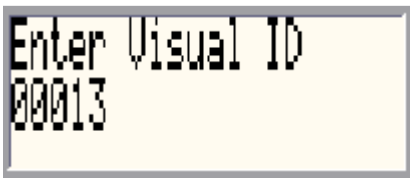
Selection List required is Scanning.



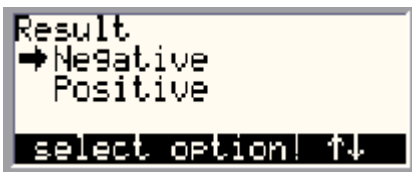
Today's date is entered, change this if necessary and press



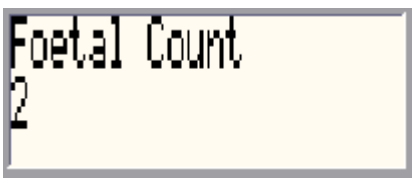
Press the  and read the animal's tag. If the tag cannot be read, wait for the read to finish. Press the  when it says reading failed. Press the  and when it says Leave Empty press .



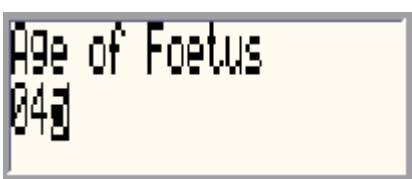
You can now enter the management/ear no. of the ewe Press the



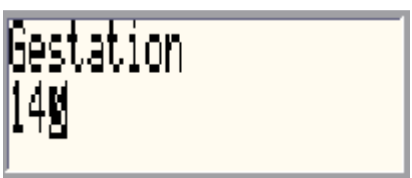
Select the scan result using the keypad and press



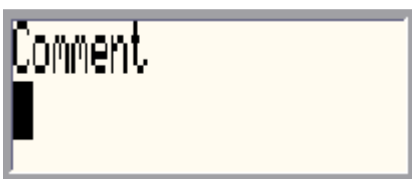
Enter the Foetal Count and press



Enter the Foetal Age and press





Enter the Gestation and press



Enter any comment required using the keypad and press



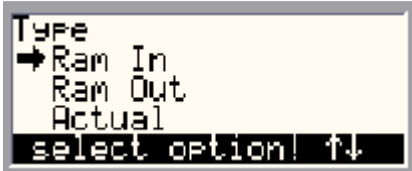


Press  to accept the scan recording. Press  to cancel the scanning.

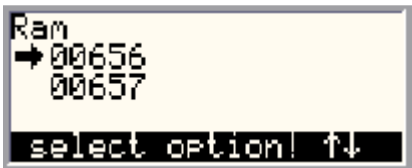
Selection Lists required are Rams and Inseminators.



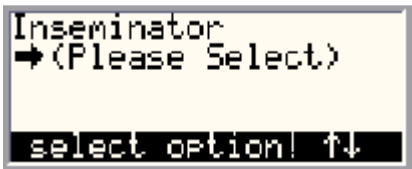
Today's date is entered, change this if necessary and press



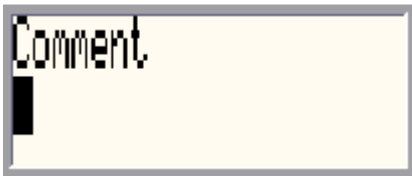
Select the service type using the keypad and press



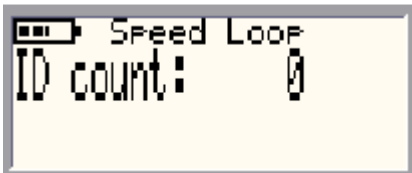
Select the Ram using the keypad and press



Select the Inseminator if relevant using the keypad and press



Enter an comment required using the keypad and press



Speed Loop is now active. The Reader is in constant read mode and will record each tag contacted.

To stop/pause the Speed Loop press



twice.



To restart the Speed Loop press



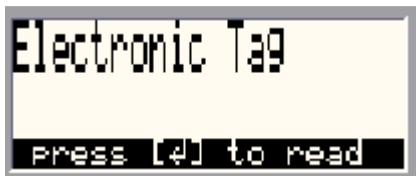
To stop the Speed Loop



Selection Lists are not required.



Today's date is entered, change this if necessary and press



Press the



and read the animal's tag. If the tag cannot be read, wait

for the read to finish. Press the

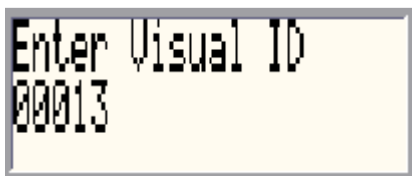


when it says reading failed. Press the

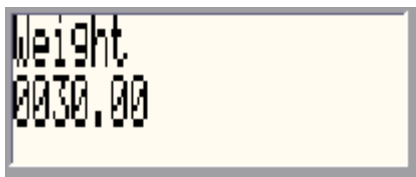


and when it says Leave

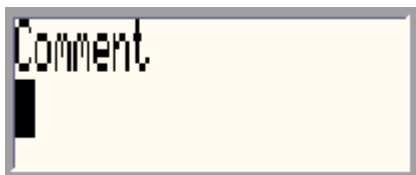
Empty press



You can now enter the management/ear no. of the ewe Press the



Enter the Animals' weight using the keypad and press



Enter an comment required using the keypad and press



weighing.

Press



to accept the weight recording. Press






to cancel the

Selection Lists are not required. Need to be connected to weighhead.

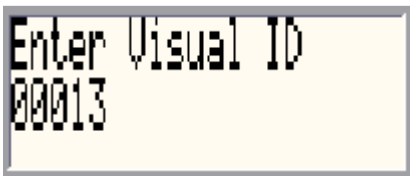



Today's date is entered, change this if necessary and press

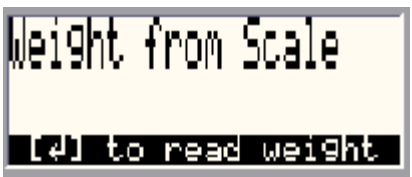



Press the  and read the animal's tag. If the tag cannot be read, wait for the read to finish. Press the  when it says reading failed. Press the  and when it says Leave




Empty press .

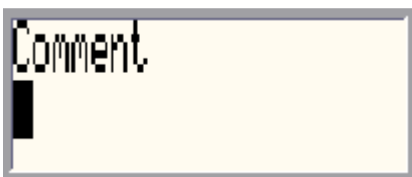


You can now enter the management/ear no. of the ewe Press the 





When the weight has settled on the weighhead click . The reader will attempt to read the weight.

If you get a No Read Message -. Press the  when it says No Read. Press the  and when it says Leave Empty press .



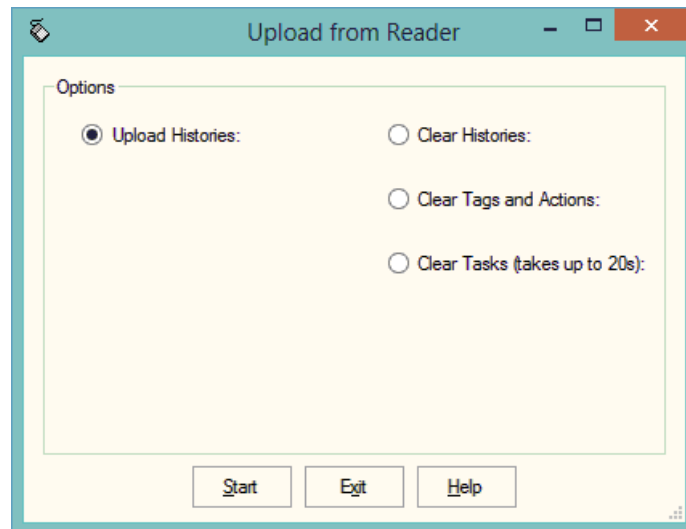
Enter an comment required using the keypad and press



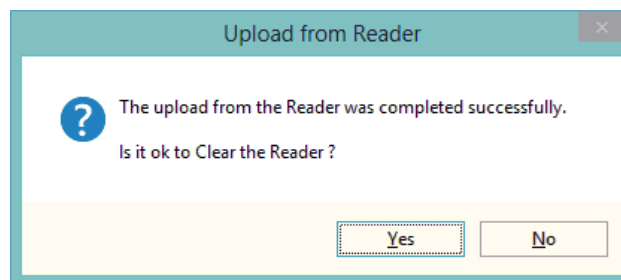
Press  to accept the weight recording. Press  to cancel the weighing.

3.15 Upload from Reader

This transfers the information recorded on the APR500 back to the PC. As all the necessary detail has been recorded on the APR500 the data is transferred straight in to update the Animal Records or Flock Records without any further input needed.



- 1 Upload Histories - Click Start to transfer data to records.



If you wish to clear the recorded data from the reader click Yes.

- 4 Clear Histories – Will clear the recorded data from the reader. Take care that you have transferred all the data you need before doing this.
- 5 Clear Tags and Actions – Will Clear any animal records and action lists from the reader. Download will need to be used to repopulate the reader.
- 6 Clear Tasks – Will clear all the task from the reader. This can take a little time, please be patient. Download will need to be used to repopulate the reader.